

# Educating Character



**Charles Fadel**

Founder, CCR

[www.curriculumredesign.org](http://www.curriculumredesign.org)

[Charles@curriculumredesign.org](mailto:Charles@curriculumredesign.org)

# Our World

A large, billowing mushroom cloud of nuclear fallout rises from the ocean surface. The cloud is composed of dark, dense smoke and debris at the base, transitioning to lighter, more diffuse clouds as it ascends. The background is a clear blue sky, and the foreground shows the dark blue surface of the ocean with some whitecaps.

# VUCA

**Volatile**

**Uncertain**

**Complex**

**Ambiguous**

# Societal Challenges

The background of the slide is a reproduction of the Japanese woodblock print 'The Great Wave off Kanagawa' by Katsushika Hokusai. It depicts a massive, curling blue wave with white foam, about to crash over a small boat. In the distance, the snow-capped Mount Fuji is visible under a pale, hazy sky.

## **Greed**

Financial Meltdown  
Global Warming  
Personal Privacy

## **Intolerance**

Religious fundamentalism  
Political Absolutism

# Personal Challenges

Employability  
Belonging  
→ Happiness



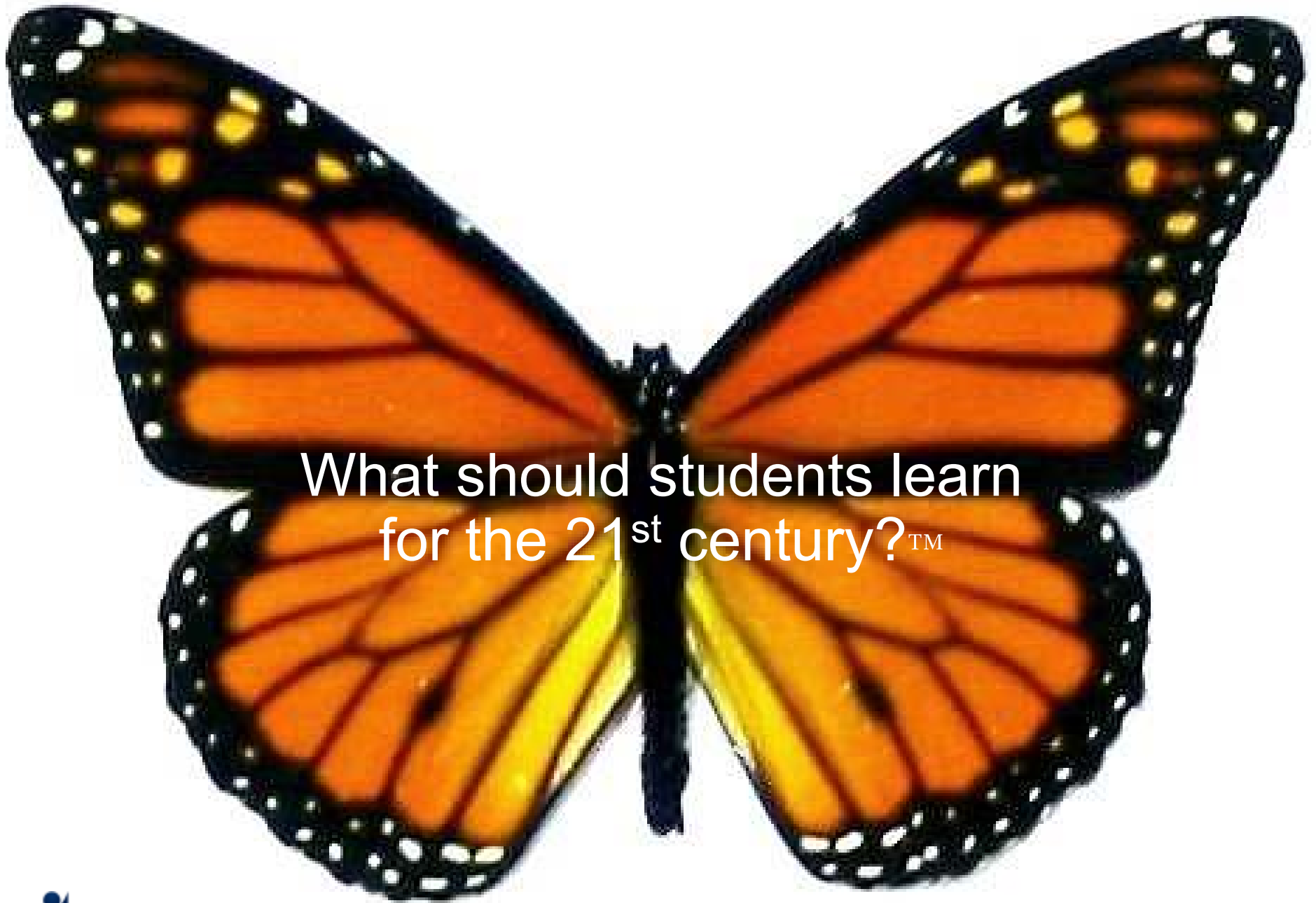


# Economic Challenges

**Globalization**  
**Innovation**







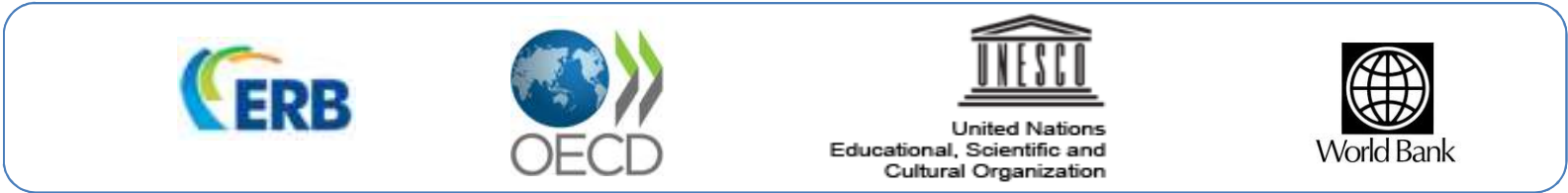
What should students learn  
for the 21<sup>st</sup> century?<sup>TM</sup>



CENTER FOR CURRICULUM REDESIGN

# Coalition of key global players

## International organizations



## Jurisdictions



## Academia



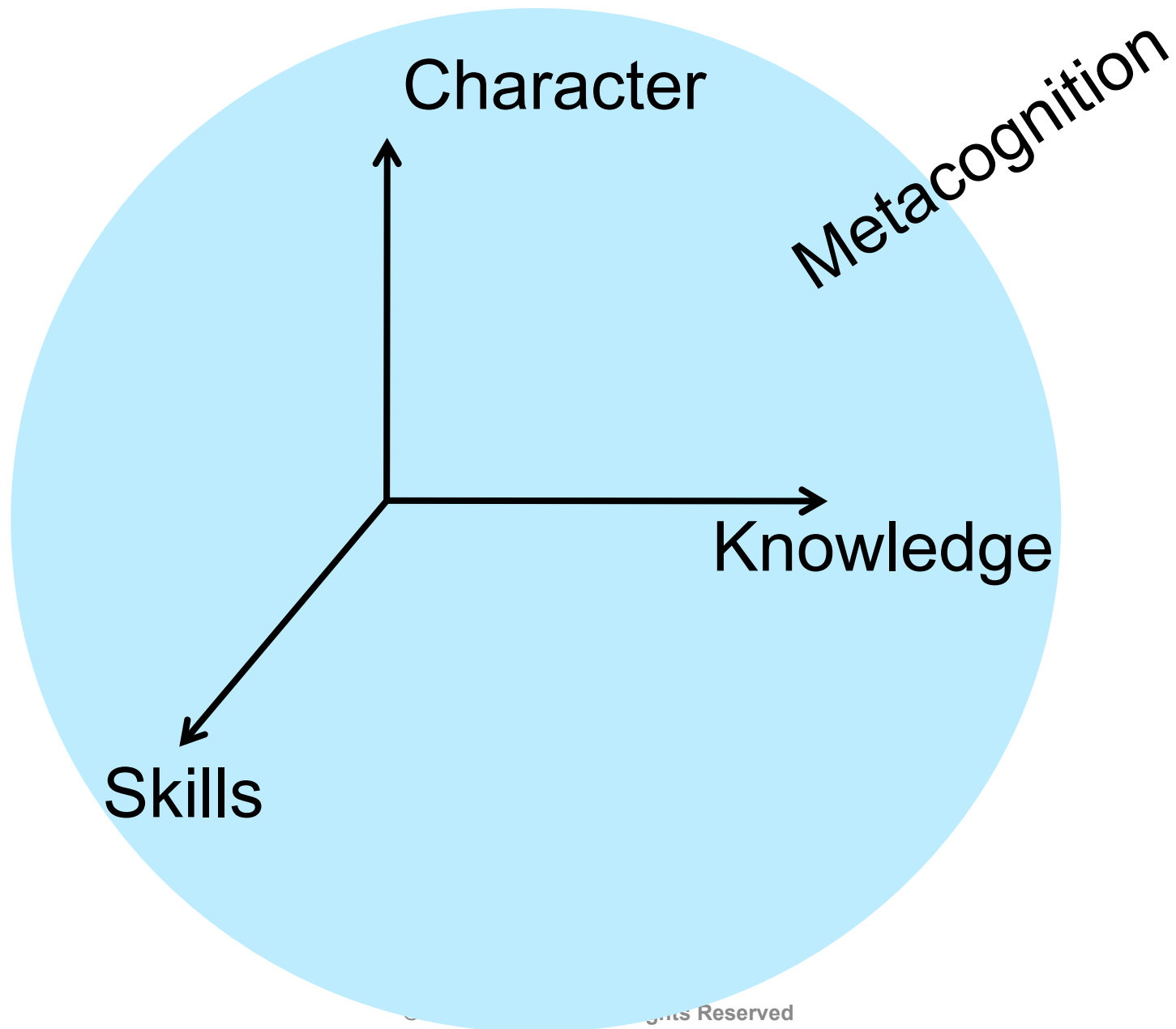
## Foundations & Non-Profits



## Corporations



# CCR's Framework for "Education with a capital E"

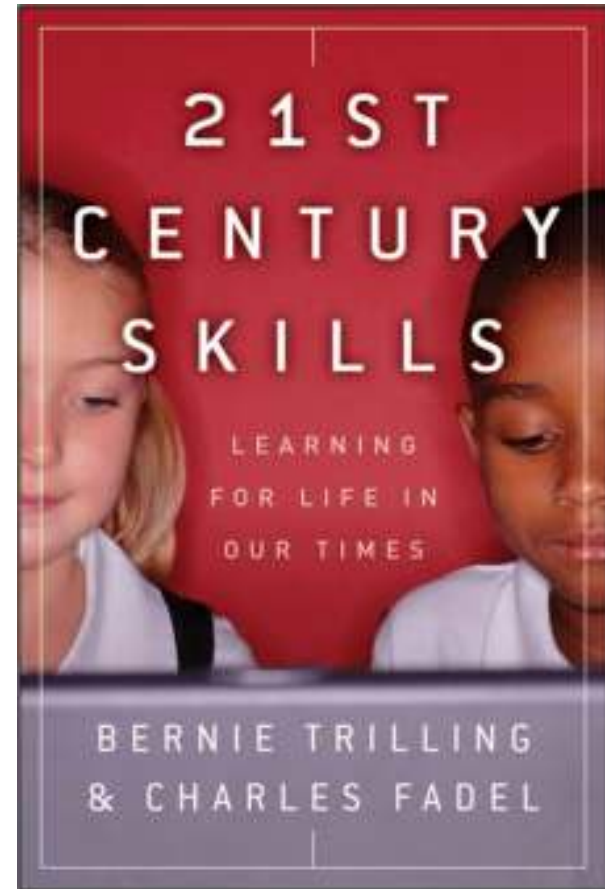




# Definition: (“Higher-Order Thinking”) Skills

## The 4C’s:

- Creativity
- Critical Thinking
- Communication
- Collaboration



... are part of OECD’s PIAAC except Creativity

# Definition

“Character” =

“Agency, Attitudes, Behaviors, Dispositions,  
Mindsets, Personality, Temperament, Values”

= “Social & Emotional Skills” (OECD)

~~“Non-Cognitive”~~

# Note

The table on the next page is a *composite of*:

- CharacterEd.net
- Young Foundation
- Singapore curriculum
- Character Education Partnership
- Success DNA
- P21.org “life and career skills”
- KIPP schools
- 500+ Teachers inputs
- etc

# 7 Top Character Traits\* (work-in-progress)

Purpose	Top Traits	Associated Traits and Concepts
<b>Personal</b> (Intrapersonal; managing self)	<b>Mindfulness</b> <i>(basal, and linked to Metacognition)</i>	Self-awareness, self-esteem, self-actualization, vision, insight, consciousness, presence, interconnectedness, empathy, sensibility, patience, acceptance, appreciation, tranquility, balance, spirituality, existentiality, oneness, beauty, gratitude, interdependency, happiness.
	<b>Curiosity</b>	Open-mindedness, exploration, passion, self-direction, motivation, initiative, innovation, enthusiasm, spontaneity.
	<b>Courage</b>	Bravery, determination, fortitude, confidence, risk taking, grit, persistence, toughness, enthusiasm, zest, optimism, inspiration, energy, vigor, zeal, cheerfulness, humor, stability.
	<b>Resilience</b>	Perserverence, resourcefulness, tenacity, grit, spunk, charisma, confidence, adaptability, dealing with ambiguity, flexibility, self-discipline, self-control, feedback, effort, diligence.
<b>Social</b> (Interpersonal; working with others)	<b>Ethics</b>	Humaneness, kindness, respect, justice, equity, fairness, compassion, tolerance, inclusiveness, integrity, loyalty, honesty, truthfulness, trustworthiness, decency, authenticity, genuineness, consideration, forgiveness, virtue, love, care, helpfulness, generosity, charity, devotion, belonging.
	<b>Cooperation</b>	Social awareness, cross-cultural awareness, listening/speaking, sharing, dependability, reliability, conscientiousness, efficiency, productivity, results orientation, focus, precision, project management, execution, socialization, diversity, decorum, observation.
	<b>Leadership</b>	Responsibility, accountability, humbleness, vision, inspiration, integrity, organization and delegation, mentorship, commitment, engagement, leading by example, goal-orientation, consistency, patience, self-reflection.

- To avoid confusion with “Skills”
- Neural plasticity → Traits can be learned

# Challenges

- Goal-oriented framework (clear, complete ontology & taxonomy)
- Succinct (so it can be implemented)
- Global consensus (reasonably)

Then:

- Rebalanced curricula (not Knowledge-only)
- Practices-centric (for behavior modification)
- Measurable to the extent possible (Research lagging)



# Reserve the date

## Global Character Education Conference

- October 22-24, 2014 in Geneva, Switzerland
- Check [www.curriculumredesign.com](http://www.curriculumredesign.com) for announcement soon



---

# Thank you !

“What should students learn for the 21<sup>st</sup> century?™”



CENTER FOR  
CURRICULUM  
REDESIGN

[www.curriculumredesign.org](http://www.curriculumredesign.org)